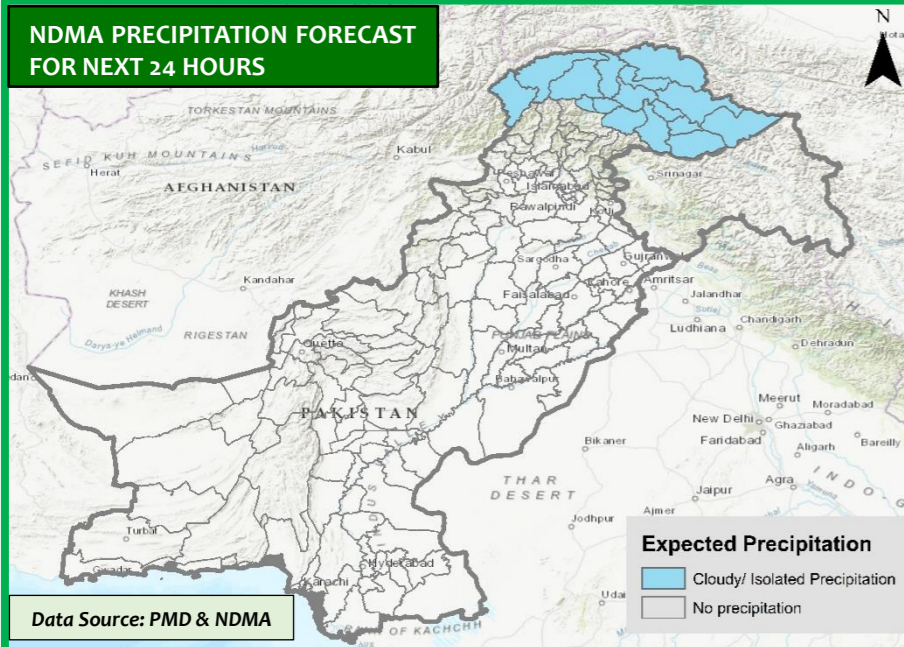




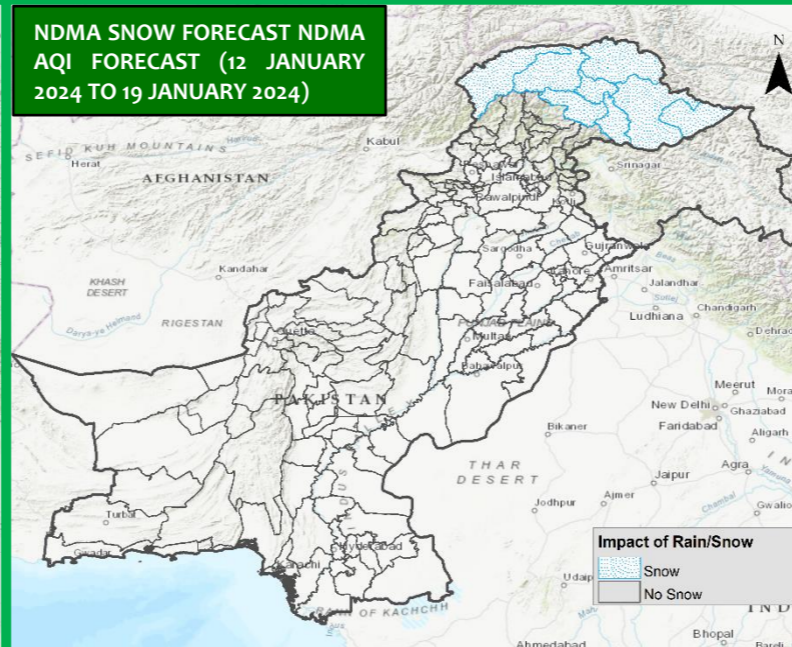
NDMA EXECUTIVE UPDATE – WINTER HAZARDS (12 JANUARY 2024 TO 19 JANUARY 2024)



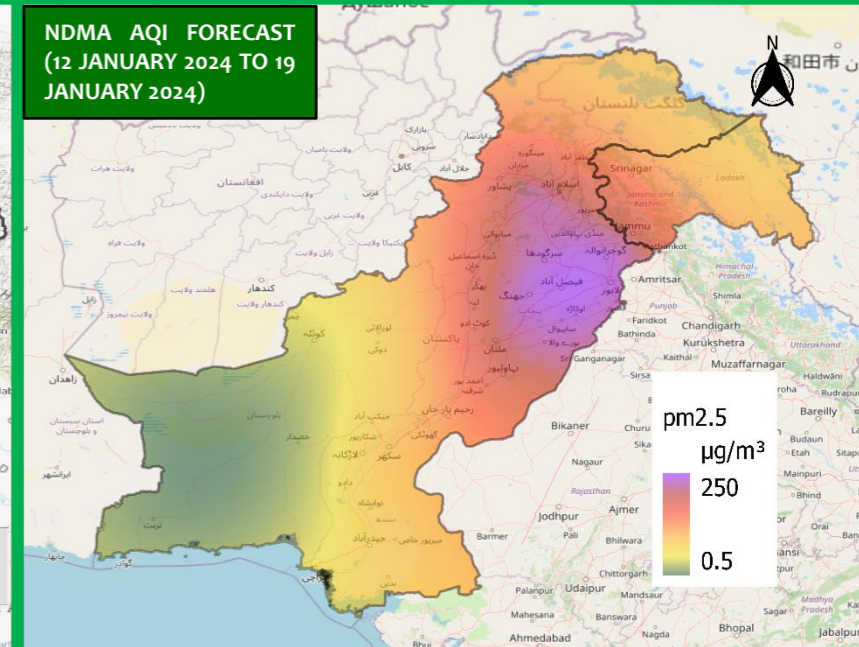
NDMA PRECIPITATION FORECAST FOR NEXT 24 HOURS



NDMA SNOW FORECAST NDMA AQI FORECAST (12 JANUARY 2024 TO 19 JANUARY 2024)



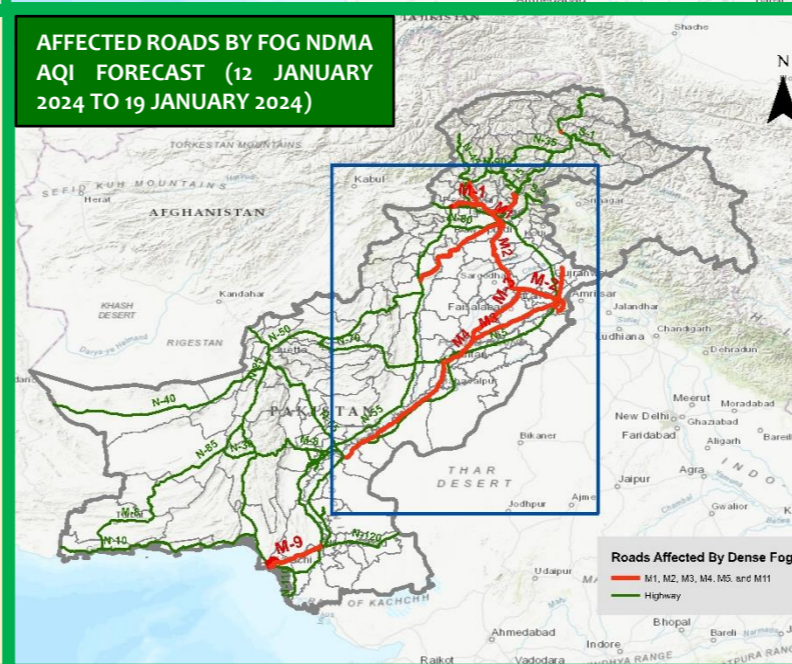
NDMA AQI FORECAST (12 JANUARY 2024 TO 19 JANUARY 2024)



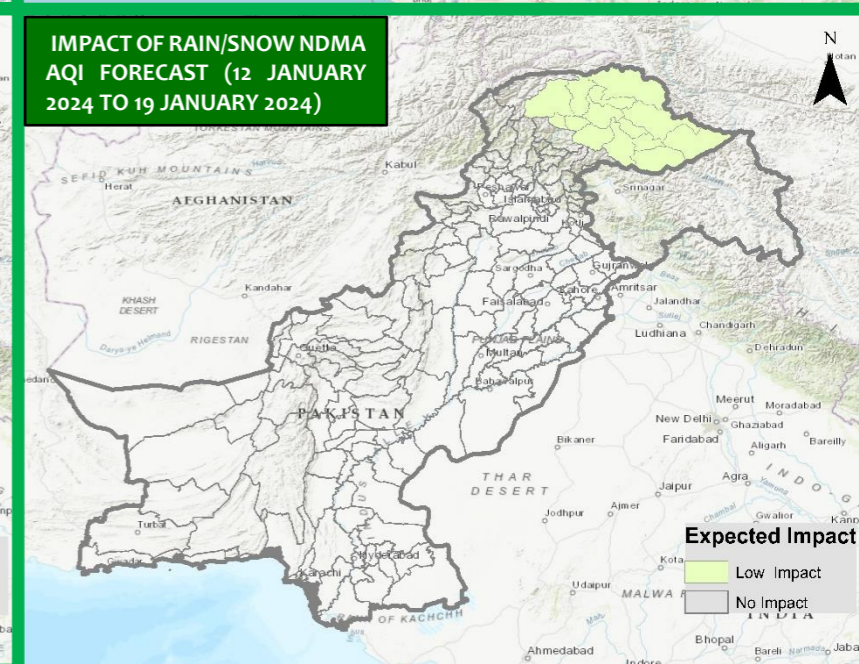
TOP RAIN / SNOW RECORDED LAST 24 HOURS (MM)

- **Balochistan.** Nil
- **Khyber Pakhtunkhwa.** Nil
- **Punjab.** Nil
- **Sindh.** Nil
- **Gilgit-Baltistan.** Nil
- **State of AJ&K.** Nil
- **Islamabad Capital Territory.** Nil

AFFECTED ROADS BY FOG NDMA AQI FORECAST (12 JANUARY 2024 TO 19 JANUARY 2024)



IMPACT OF RAIN/SNOW NDMA AQI FORECAST (12 JANUARY 2024 TO 19 JANUARY 2024)



FORECASTED IMPACTS

- No **adverse weather systems** expected during this week (12 January 2024 TO 19 January 2024)

WEATHER FOR COMING WEEK

- **Balochistan.** Cold and dry weather conditions are likely to persist in all parts of the province.
- **Khyber Pakhtunkhwa.** Cold temperature conditions with dense fog during morning and night times, are likely to persist in all parts of the province. Additionally, cloudiness and isolated precipitation is expected in upper KPK.
- **Punjab.** Cold and dry weather with dense fog will persist during morning and night times in various parts of the province.
- **Sindh.** Dry weather with cool nights and foggy / misty mornings are expected to prevail over the province.
- **Gilgit Baltistan.** Isolated precipitation is expected in parts of the province along with snow in high elevated areas.
- **State of AJ&K.** Cold weather with cloudiness is expected in most areas.
- **Islamabad Capital Territory.** Cold and dry weather is likely to persist in the city.

GUIDANCE ISSUED

- PDMA to undertake regular public awareness on all media channels / social media to maximise general public’s knowledge on risks associated with winter season; colder temperatures, freezing rain, snowfall, fog, smog, etc.
- NHA / FWO / Local C&W Depts to ensure pre-placement of machinery and timely clearance of snowfall from roads / highways.
- Rescue Services, Armed Forces and leading NGOs / CSOs to ensure availability of personnel / equipment in the indicated areas & be on stand-by for rapid response in case of any forecasted adverse weather systems.

WEATHER OUTLOOK – TOURIST LOCATIONS – NEXT 7 DAYS		
Locations	Isolated Thunderstorm/Rain / Snowfall	Temperature (°C)
Murree	No to Light Snow	-1 to 8
Galiyat	No to Light Snow	-2 to 7
Naran	Light Snow	-9 to 5
Kaghan	Light Snow	-7 to 6
Malamjabba	Light Snow	-1 to 9
Kalam	Light Snow	-2 to 10
Neelum	Light Snow	-1 to 7
Naltar	Light Snow	-8 to 4
Rattu	Light Snow	-5 to 3
Skardu	Light Snow	-10 to 3

LOW VISIBILITY ADVISORY
DRIVE CAUTIOUSLY ON ROADS (M1, M2, M3, M4, M5, M11 AND M14) AND LINK ROADS AFFECTED BY DENSE FOG. MAINTAIN A SAFE FOLLOWING DISTANCE AND REDUCE SPEED TO ADAPT TO LIMITED VISIBILITY,
AVOID HIGH BEAMS BECAUSE THEY CAN REFLECT OFF FOG PARTICLES, WORSENING VISIBILITY. STICK TO LOW BEAMS INSTEAD. USE FOG LIGHTS TO IMPROVE VISIBILITY CLOSE TO THE GROUND.
STAY TUNED TO WEATHER UPDATES AND BE AWARE OF ANY CHANGES IN VISIBILITY CONDITIONS DURING YOUR JOURNEY.

TOURIST ADVISORY
TOURISTS VISITING AREAS SUSCEPTIBLE TO SNOW ARE ADVISED TO REMAIN VIGILANT AS LIGHT SNOW IS EXPECTED IN NORTHERN PARTS OF THE COUNTRY.
TOURISTS VISITING AREAS OF GILGIT-BALTISTAN AND UPPER KPK ARE HIGHLY ADVISED TO REMAIN ALERT, AS LIGHT TO MODERATE SNOW/ PRECIPITATION IS EXPECTED IN THE COMING DAYS.
TOURISTS VISITING NORTHERN AREAS SHOULD BE PREPARED FOR CHILLY TEMPERATURES, PARTICULARLY DURING THE EVENINGS AND EARLY MORNINGS.